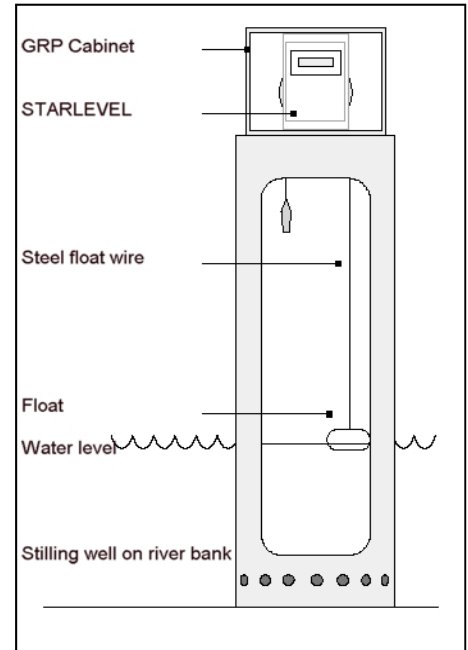


STARLEVEL Water Level and Flow Gauge

Starlevel is a precision shaft encoder water level instrument used to measure level in streams, rivers, lakes and reservoirs. The measuring range is 0 to 65 metres at 1mm resolution or 0 to 13 metres at 0.2mm resolution. There are no analogue components so the accuracy is maintained without calibration for the life of the instrument.

A float rests on the water surface and is linked to the shaft pulley with special non slip steel wire with a small counterweight for tension. As the water level changes the shaft is rotated and this is measured digitally for local display and logging.

A new feature in the latest model has made the Starlevel directly compatible with many new data loggers and telemetry outstations. The 6541D now has an SDI-12 digital output as standard, which uses a very simple 3 wire link to host equipment.

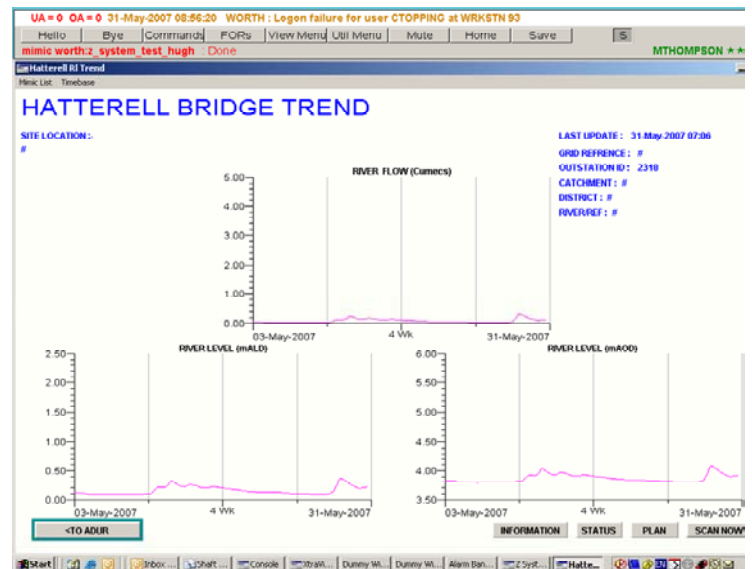


Environment Agency uses Starlevel with DL7000.

In recent tests one region of the Environment Agency proved that the new SDI-12 Starlevel was directly compatible with the latest DL7000 series of telemetry outstations from Dynamic Logic.

The data shown on the right was collected during the trial period and proved to the EA staff that the high stability and precision of the Starlevel instrument was very easy to incorporate into their standard telemetry network.

The shaft encoder requires only 1.4mA and can operate from internal battery for 1 to 2 years, or can be linked to the telemetry outstation power source.



Starlevel as a Gauging Station

Starlevel can also be used to measure flow using a primary flow device such as a weir or flume in a water channel.

In this application the instrument measures water level behind the weir and the internal data logger option is programmed with a look-up table of level to flow for the specific weir design. For these installations, Streamline Measurement can perform all the calculations and programming required to deliver flow results. The level data can also be recorded if required for quality checking purposes.

The photo on the right is of a Starlevel on a small stream using a “V” notch weir with the instrument mounted directly onto a stilling well connected by a pipe to the stream bed.

